



# ASC Product Guidebook 2025

---





## Our Products

### Standard

- Architectural Canopies
- Bahama Shutters
- Fabric Awnings
- Louvered Sunshades
- Metal Utility Awnings
- Non-Illuminated Signs
- Routed Signs
- Outdoor Railing Systems
- Standing Seam Awnings
- Banners
- Digital Print
- Flex Face
- Vinyl Graphics

### Non-Standard

- Roof Screens
- Green Walls
- Architectural Features
- Patio Canopies
- Slat Walls
- Metal Enclosures
- Custom Aluminum Fabrication & Much More!

#### Locations:

#### ASC IN (Headquarters)

340 Hoosier Dr.  
Angola, IN 46703  
(260) 665-1521

#### ASC FL

1710 Industrial St., Suite 5  
Edgewater, FL 32132

## Your National and Local Partner

ASC is a full-service project management company specializing in fabricating a variety of aluminum products. Some of those products include fabric awnings, architectural canopies, bahama shutters, routed signage, patio railing, and standing seam awnings.

Our two manufacturing facilities are strategically located and allow us to manage projects in all 50 states and the Caribbean. Our two facilities are in Angola, IN and Edgewater, FL. These locations provide us with unlimited reach to service national, regional, and local projects. Our priority is to provide the best products and services at competitive pricing to help maximize brand identity and to enhance the overall aesthetics of our clients' buildings and storefronts.



**Have a national or regional awning program?** Ask us about our project management services. We offer turnkey services for all projects, and our experienced team of accounts and project staff excel at managing national programs at scale. Our turnkey services include, but are not limited to:

- ▶ Site-Surveys
- ▶ Code Research
- ▶ Permit Procurement
- ▶ Delivery
- ▶ Installation
- ▶ Graphic Design
- ▶ Drafting
- ▶ Engineering
- ▶ ... And More!

**Need a quote? Contact our team today!**

**Josh Noecker**—Outside Sales Representative

**Direct:** 570-691-7862

**Office:** 260-665-1521 x 158

**Email:** [jnoecker@awningandsigncontractors.com](mailto:jnoecker@awningandsigncontractors.com)

**Web:** [www.ascfabricators.com](http://www.ascfabricators.com)



## Standard Features & Components

- Build-to-Spec Dimensions
- Lightweight Aluminum Frame
- Frame Finishes
  - Paint
  - Powder Coat
  - Mill-finish
- Graphics and Design
  - Digital Print Fabric
  - Applied Vinyl
  - Heat Transferred Vinyl
  - Rigid PVC Lettering
  - Eradicable Graphics
- Backlit Options
- Mounting Options
  - Wall Mounted
  - Walkway
  - Freestanding
- Ready To Install
- Made in the USA

## Fabric Awnings

Fabric awnings are a staple product at ASC. We offer a durable and attractive solution to upgrade your commercial building's exterior shading system. Fabric awnings are typically installed above windows, doors, drive-throughs, walkways, and patios to provide shade and protection from the sun's rays, rain, snow, and wind. They are a versatile option for adding style and functionality to outdoor spaces while also reducing energy costs by blocking out sunlight and heat.

Our fabric awnings are built to withstand the elements. We construct our awnings with high-strength extruded aluminum frames and utilize industry leading fabrics and substrates to meet your project's demands. We provide an array of options and features for your awnings, such as LED lighting, printed or applied graphics, rigid PVC lettering, decorative sign panels, decorative frames, and more.

We offer a wide selection of standard and non-standard paint and powder coat finishes to ensure this product has a high-quality and long-lasting finish. Our fabric awnings are available in a variety of fabric colors, patterns, and graphic designs to match the aesthetic of any business. Whether you need a standard entrance awning, or something more elaborate, our experienced team is here to help you every step of the way.

Shed



Slant



Waterfall



Marquee



### Locations:

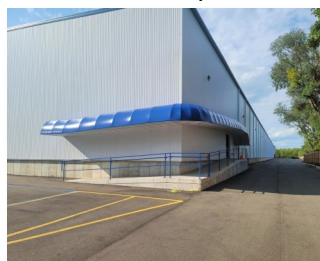
#### ASC IN (Headquarters)

340 Hoosier Dr.  
Angola, IN 46703  
(260) 665-1521

#### ASC FL

1710 Industrial St., Suite 5  
Edgewater, FL 32132

Convex (L-Shaped)



Dome



### Standard Styles:

Shed

Slant

Waterfall

Marquee

Convex

Dome

Radius Marquee

Gable Marquee

Box

Concave

Hipped Shed

## Architectural Canopy

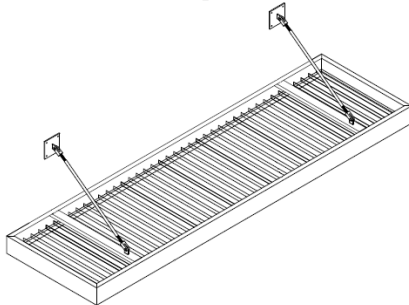
ASC's architectural canopies offer a durable and attractive solution to enhance your building's exterior shading system. Excellent for commercial and industrial applications, architectural canopies provide shade and cover from sun, snow, and rain. Whether it's for a storefront, drive-through window, outside patio, or building entrance, our team can assist with helping you choose the best option for your project!

Fully welded and built with high-strength extruded aluminum alloy, our architectural canopies are light-weight and built to withstand the elements. We offer a wide selection of standard and non-standard paint and powder coat finishes to ensure this product has a high-quality and long-lasting finish to meet your project's specific needs.

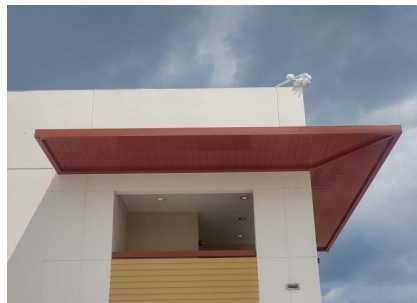
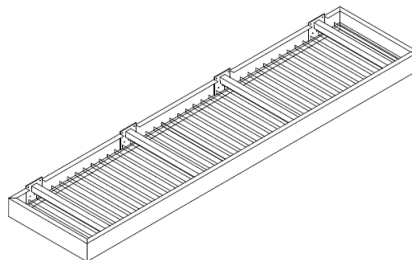
Depending on your project's requirements, our architectural canopies can be cantilevered or mounted with adjustable hanger arms. Both mounting options use the building's existing structural support system and help distribute wind and snow loads over large areas.

- Gutter Fascia
  - 8", 10", or 12"
- Roof Pans
  - 3" x 6"
  - 2" x 8"
- 4" Structural Channel
- Mounting Options
  - Adjustable Hanger Arms
  - Cantilever
- Heavy-Duty Mounting Options
- Draining Scuppers
- LED Soffit Lights
- Powder Coat or Paint
  - White, Black, or Bronze
  - Other colors on request
- Custom Specs and Configurations Available
- Made in the USA

With Hanger Arms



Cantilevered



### Locations:

#### ASC IN (Headquarters)

340 Hoosier Dr.  
Angola, IN 46703  
(260) 665-1521

#### ASC FL

1710 Industrial Dr., Suite 5  
Edgewater, FL 32132

- Decorative Bands  
Varying Sizes Available
- Mechanically Fastened and  
Welded Construction
- Paint or Powder Coat  
Available
- Made in the USA

## Architectural Decorative Bands

ASC's architectural decorative bands offer a durable and attractive solution that elevate your commercial building's exterior façade. Architectural decoration bands bring personality and style to your commercial projects. They add dimension and character and attract the eye of nearby foot traffic and vehicle traffic alike.

With our architectural decorative bands, you can choose from a wide selection of band styles designed to enhance the overall visual appeal of your building and the architectural flair of your project. Our decorative bands are made from high-quality aluminum and offer endless possibilities for enhancing your project's aesthetics. Whether you're looking for classic designs or a contemporary style, we have the solution for you.

We offer a wide selection of standard and non-standard paint or powder coat finishes. The powder coat or paint options allow for customization, enabling the decorative bands to seamlessly integrate into the overall design aesthetic while also providing long-lasting protection against the elements.

With our wide range of customizable options, we can help you find the perfect products to bring your unique project to life. From materials to sizes to finishes, we can work with you to create a solutions that perfectly fit your needs and vision.



### Locations:

#### ASC IN (Headquarters)

340 Hoosier Dr.  
Angola, IN 46703  
(260) 665-1521

#### ASC FL

1710 Industrial St., Suite 5  
Edgewater, FL 32132

## Louvered Sunshades

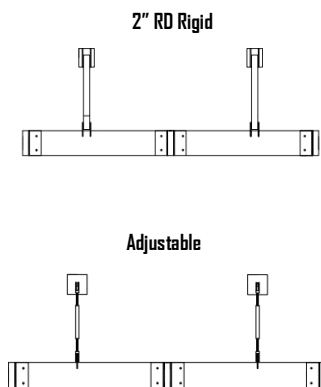
ASC's louvered sunshades offer a durable and attractive solution to upgrade your commercial building's exterior shading system. Louvered sunshades effectively help reduce glare from the sun and provide shade and comfort to the occupants inside. There are three different blade profiles to choose from, ensuring that your sunshade will achieve the look your project demands.

Fully welded and built with high-strength extruded aluminum alloy, our louvered sunshades are built to withstand the elements. We offer a wide selection of standard and non-standard paint and powder coat finishes to ensure this product has a high-quality and long-lasting finish to meet your project's specific needs.

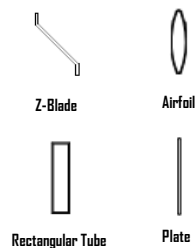
Depending on your project's requirements, our louvered sunshades can be mounted on rigid hanger arms or adjustable hanger arms. Both hanging arm options use the building's existing structural support system, and help distribute wind and snow loads over large areas.

- 4' Projection
- 8" Fascia
- Blade Options
  - 6" Airfoil
  - 8" x 2" Rectangular Tube
  - 8" x 1/4" Plate
- Rigid Hanger Arms
  - 2" RD Rigid Arm
  - 5" x 6" Tie-Back
  - 1/2" Threaded Rod
- Adjustable Hanger Rod
  - 6" x 6" Mounting Plate
  - 1/2" RD Welded Eye Bolt
  - 1/2" Threaded Rod
- Powder Coat or Paint
  - White, Black, or Bronze
  - Other colors on request
- Stainless Steel Hardware
- Made in the USA

### Hanger Arms



### Blade Profile Options



### Locations:

#### ASC IN (Headquarters)

340 Hoosier Dr.  
Angola, IN 46703  
(260) 665-1521

#### ASC FL

1710 Industrial Dr., Suite 5  
Edgewater, FL 32132

## Standard Features & Components

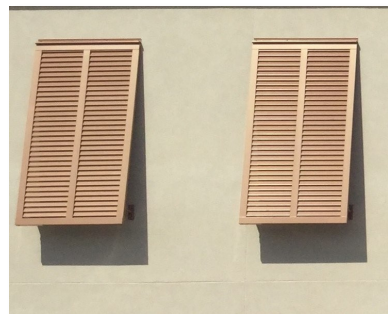
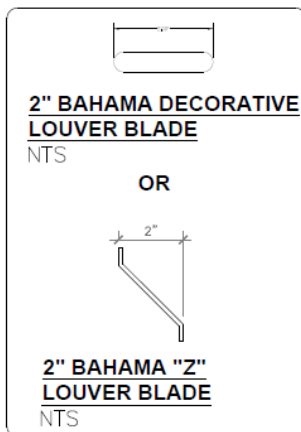
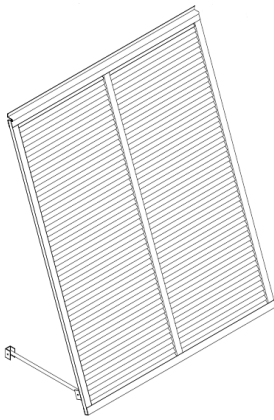
- Custom Widths, Height, and Projections
- Stationary or Collapsible Arms
- Center Mullions Required for Blade Spans Larger than 42"
- 1-1/4" x .080 Aluminum Extrusion Perimeter Frame
- Top Hinge Secured to Existing Wall
- Blade Options
  - 2" Decorative Round
  - 2" Z-Style Louver Blade
- Powder Coat or Paint
  - White, Black, or Bronze
  - Other colors on request
- Non-Impact Rated
- Made in the USA

## Bahama Shutter

ASC's aluminum bahama shutters offer a durable, protective, and low-maintenance alternative to the traditional wood shutter. These fixed or collapsible shutters bring an attractive and tropical look to your windows while providing privacy and protection from the elements. Our bahama shutters are decorative and non-impact rated.

Our shutters have two styles of aluminum "blades", decorative round and z-style louver blades (as shown below). We also offer high-quality paint or powder coat finishes for our bahama shutters per request. Our bahama shutters can be shipped directly to you with the appropriate mounting hardware included, so your new shutter is immediately ready for install!

These shutters are lightweight, making installation a simple operation. For more complex projects, our project and account management teams are experienced and available to help you achieve the look and design you want. We offer full project management services, including but not limited to design, permitting, engineering, and installation.



### Locations:

**ASC IN (Headquarters)**  
340 Hoosier Dr.  
Angola, IN 46703  
(260) 665-1521

**ASC FL**  
1710 Industrial Dr., Suite 5  
Edgewater, FL 32132

## Standard Features & Components

- Widths  
- 4', 6', & 8'
- Projection  
- 3'
- Height  
- 1'
- Brake-Formed
- One-Piece Awning Deck
- .090 Seamless Aluminum
- Aluminum Face Closed-Ends
- 2" x 2" Integrated Gutter
- Powder Coat or Paint  
- White, Black, or Bronze  
- Other colors on request
- Custom Specs and Configurations Available
- Made in the USA

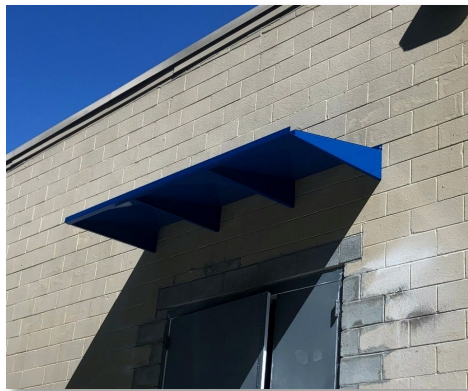
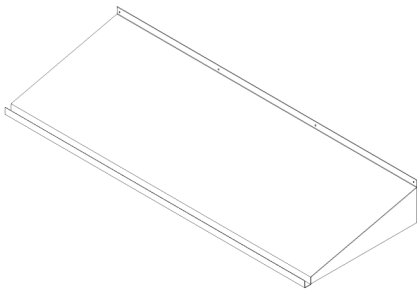
## Metal Utility Awning

ASC's metal utility awnings offer a cost-effective and durable upgrade from the typical fabric awning. Our metal utility awnings provide form and function, with an updated modern look. While best suited for commercial and industrial applications, these awnings can also be used anywhere a traditional fabric awning would go.

Built as an aluminum one-piece seamless structure, our metal utility awnings are lightweight and low maintenance. We offer a wide selection of standard and non-standard paint or powder coat finishes to ensure this product has a high-quality and long-lasting finish to meet your project's specific needs.

Regardless of the project at hand, our metal utility awnings require simple attachments and can be mounted to either new construction sites or existing buildings. Our awnings come in three standard widths, and can be mounted together in sections for projects that require widths greater than eight feet.

Metal Utility Awning



### Locations:

#### ASC IN (Headquarters)

340 Hoosier Dr.  
Angola, IN 46703  
(260) 665-1521

#### ASC FL

1710 Industrial Dr., Suite 5  
Edgewater, FL 32132



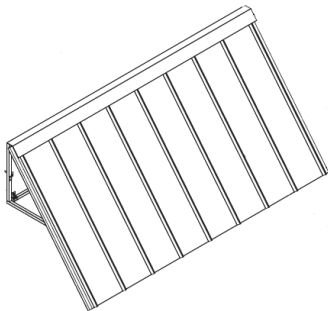
## Standing Seam Awning

ASC's standing seam metal awnings offer a durable and low-maintenance alternative to the traditional fabric awning. Aside from protection from the elements, these metal clad awnings bring an attractive and modern look to your building's façade. Standing seam metal awnings have a variety of uses and they are typically used for commercial entries, walkways, storefront windows, and more.

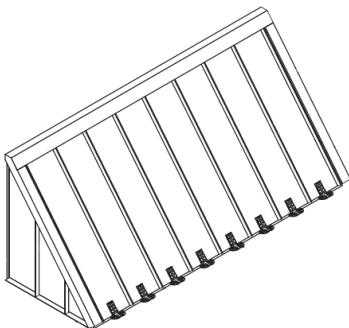
The 24 gauge galvanized metal pans create the standing "seam" through a hidden fastening system that uses hidden clips and fasteners to attach two pans together. These pans then fasten to a lightweight aluminum sub-frame. Our frames can be built to your specifications. This includes varying heights, widths, and projections.

Our standing seam metal awnings can be shipped directly to you with the appropriate mounting hardware included, so your new awning is immediately ready for install! These awnings are lightweight, making installation a simple operation. For more complex projects, our project and account management teams are experienced and available to help you achieve the look and design you want. We offer full project management services, including but not limited to design, permitting, engineering, and installation.

Open-End Style\*



Closed-End Style with Standing Seam Ends and Snowguards\*



## Standard Features & Components

- Standard Widths
  - 8", 12", or 16" Pan Widths
- Galvanized 24ga. Pans
- Mig Welded Aluminum Sub-Frame
- Closed-End Options
  - Standing Seam Panels
  - Flat-Lock Panels
  - .125 Cladding
- Top Flashing Included
- Optional Snow Guards
- Can Ship Ready-to-Install
- High Quality Color Options
- Mill Finish or Paint-to-Match Pan Underside
- Made in the USA

### Locations:

#### ASC IN (Headquarters)

340 Hoosier Dr.  
Angola, IN 46703  
(260) 665-1521

#### ASC FL

1710 Industrial Dr., Suite 5  
Edgewater, FL 32132

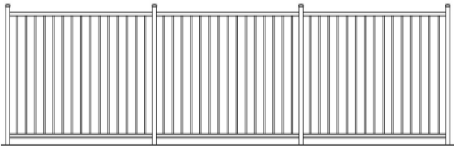
## Outdoor Railing Systems

ASC's outdoor aluminum railing systems offer a durable and attractive solution for your outdoor patio and fencing needs. Our fence systems can also be used for walkways, retaining walls, dividers, and more. Our vertical and horizontal picket options are sure to fit your needs!

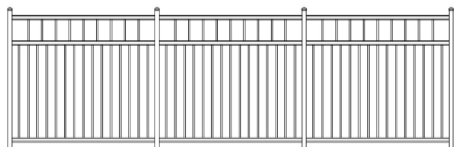
Fully welded and built with high strength alloy, our railing systems are built to withstand the elements and everyday use. We also offer a wide selection of powder coat finishes to ensure this product has a high-quality and long-lasting finish.

Safety is a top-priority and our railing systems can be modified to meet local code, including ADA and DOT specific requirements. Our standard fencing is built to reject a 4" sphere between each vertical picket. Standard minimum fence height is 3' for all ground applications, and Fire Exit/Panic Bars for exit gates can be included in the package per request.

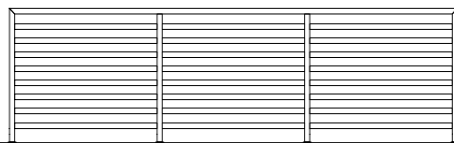
**2-Run Picket Railing**



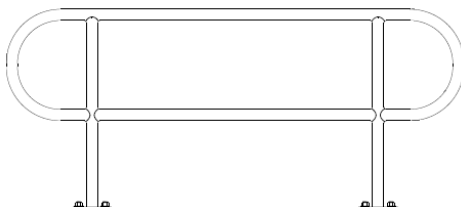
**3-Run Picket Railing**



**Horizontal Picket Railing**



**ADA/DOT Railing**



## Standard Features & Components

- Vertical Pickets
  - 2 and 3 Rail Systems
- Horizontal Pickets
- ADA and DOT Capable
- 36" Minimum Height
- 24' Max Section Width
- 6' Max Spacing Between Posts
- 2" Square Post Caps
- 1" x 2" Rail Channel
- Heavy Duty Gate Hinges
- Powder Coat Finishes
  - White
  - Black
  - Bronze
- Stainless Steel Hardware
- Base Plate or Core Drilled Ground Attachment
- Made in the USA

### Locations:

**ASC IN (Headquarters)**

340 Hoosier Dr.  
Angola, IN 46703  
(260) 665-1521

**ASC FL**

1710 Industrial Dr., Suite 5  
Edgewater, FL 32132

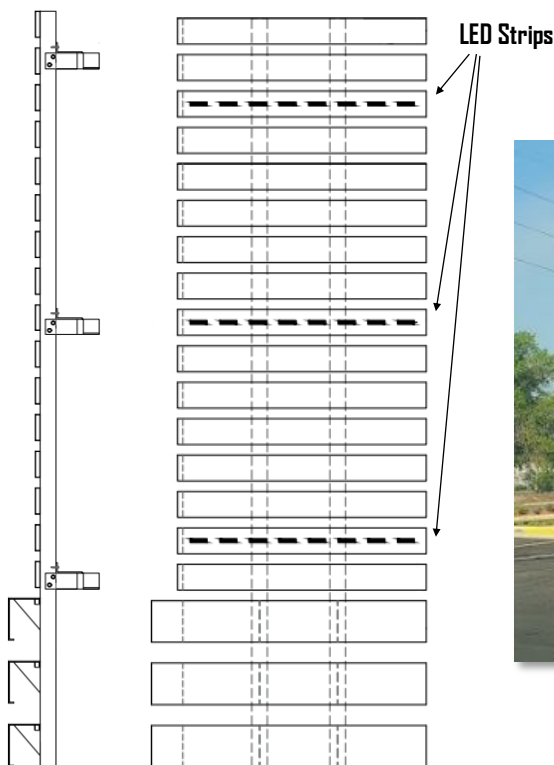
- Aluminum Tube Support Columns  
3" x 3" x .093"
- Horizontal Slats  
Louvered Aluminum Tube  
Varying Sizes Available
- Mechanically Fastened and Welded Construction
- Paint or Powder Coat Available
- LED Lighting Upon Request
- Made in the USA

## Exterior Slat Wall Systems

ASC's exterior slat wall system offers a durable and attractive solution to upgrade your commercial building's exterior. Slat walls made from aluminum is a popular choice for exterior architectural features due to its durability, sleek appearance, and versatility in design. The slats can be arranged in various patterns and configurations, creating a modern and stylish aesthetic while also providing protection from the elements. Additionally, aluminum is lightweight and low-maintenance, making it a practical option for long-lasting exterior applications.

We offer a wide selection of standard and non-standard paint or powder coat finishes. The powder coat or paint options allow for customization, enabling the slat walls to seamlessly integrate into the overall design aesthetic while also providing protection against the elements.

With our wide range of customizable options, we can help you find the perfect products to bring your unique project to life. From materials to sizes to finishes, we can work with you to create a solutions that perfectly fit your needs and vision.



Slat Wall Side and Front Panel Detail

### Locations:

#### ASC IN (Headquarters)

340 Hoosier Dr.  
Angola, IN 46703  
(260) 665-1521

#### ASC FL

1710 Industrial St., Suite 5  
Edgewater, FL 32132

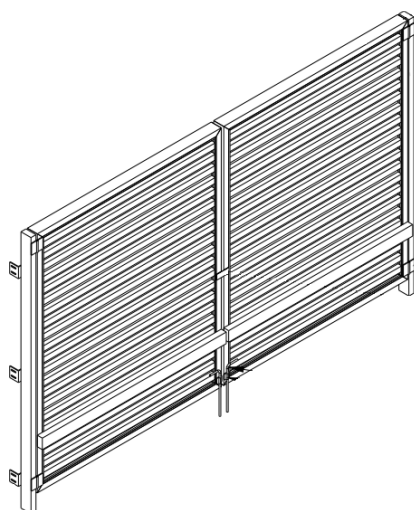
## Dumpster Enclosures

ASC's commercial dumpster enclosures are made from high-quality aluminum and provide a durable and aesthetically pleasing solution for businesses looking to maintain a clean and organized exterior space. Dumpster enclosure's also ensure security for their waste management needs. Our enclosures can be tailored to fit specific dimensions and design preferences, offering a sleek and modern look that enhances the overall appearance of the property.

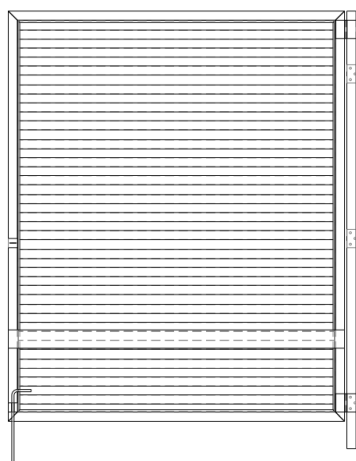
We offer a wide selection of standard and non-standard powder coat finishes to ensure this product has a high-quality and long-lasting finish to meet your project's specific needs. Our application of high-quality color options ensures longevity and resistance to rust and corrosion, making it a cost-effective and low-maintenance option for businesses seeking a reliable solution for enclosing their dumpsters.

With our wide range of customizable options, we can help you find the perfect products to bring your unique project to life. From materials to sizes to finishes, we can work with you to create a solutions that perfectly fit your needs and vision.

- 2" x 4" x .250" Aluminum Tube Frame
- Hinges
- Hasp
- Cone Bolt
- Cone Sleeve
- 3/4" Schedule 40 Pipe
- Aluminum Structural Angle 3" x 3-1/2" x .250"
- Aluminum Support Posts For Ground Mounting 4" x 4" x .125" Cut to Size
- 8" x 8" x .375" Foot Plate
- Mechanically Fastened and Welded Construction
- Paint or Powder Coat Available
- Made in the USA



Isometric View



Basic Door Assembly

### Locations:

#### ASC IN (Headquarters)

340 Hoosier Dr.  
Angola, IN 46703  
(260) 665-1521

#### ASC FL

1710 Industrial St., Suite 5  
Edgewater, FL 32132

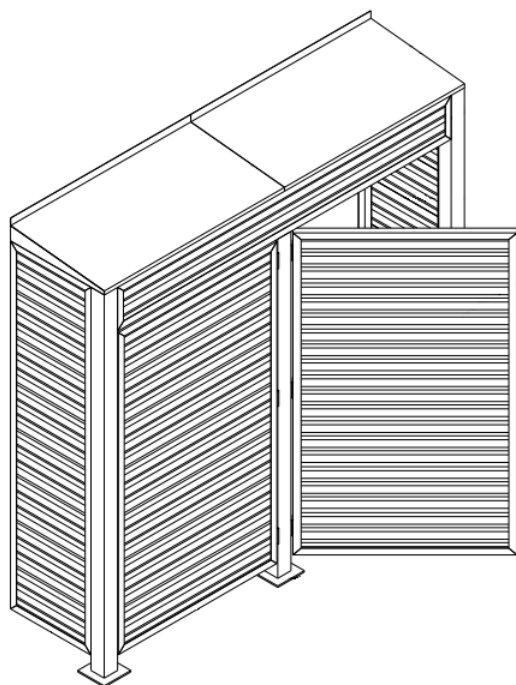
## Commercial Electrical Box Enclosures

ASC offers a range of custom electrical box covers for commercial use, suitable for both freestanding and wall-mounted installations. Commercial enclosures are generic, and are used when electrical and wiring components need to be protected. These covers are not only sturdy and long-lasting, but they can also be customized to fit specific box sizes and configurations, ensuring a precise and secure fit. With their sleek appearance and reliable performance, our custom aluminum covers offer a professional and high-quality solution for electrical enclosures in commercial projects.

We offer a wide selection of standard and non-standard paint or powder coat finishes. The powder coat or paint options allow for customization, enabling the enclosures to seamlessly integrate into the overall design aesthetic while also providing necessary protection against the elements.

With our wide range of customizable options, we can help you find the perfect products to bring your unique project to life. From materials to sizes to finishes, we can work with you to create a solution that perfectly fit your needs and vision.

- Mount and Post Mounts  
2" x 2" x .125"  
Aluminum Angle
- Break Form Aluminum  
Top Assembly  
1" x 1" x .125 Truss Member
- Aluminum Channel Perimeter  
Frame  
1-3/4" x 1-3/4" x .093
- Aluminum Support Posts  
For Ground Mounting  
4" x 4" x .125" Cut to Size  
8" x 8" x .375" Foot Plate
- Paint or Powder Coat  
Available
- Mechanically Fastened and  
Welded Construction
- Made in the USA



Standing Enclosure Isometric View

### Locations:

#### ASC IN (Headquarters)

340 Hoosier Dr.  
Angola, IN 46703  
(260) 665-1521

#### ASC FL

1710 Industrial St., Suite 5  
Edgewater, FL 32132



# Awning and Sign Contractors

## Capabilities & Specs

### Digital Print & Graphic Solutions

ASC's Graphics Department serves our customers an array of digital print and graphic products. From digitally printed awning graphics to wall and window vinyl, we have a solution for your marketing and branding needs. Whether you bring a design to us, have a program file, or want some creative influence from our team, we can help!

We are here to provide you with the expertise you would expect from an experienced and dedicated digital graphics team, plus we can handle your project from start to finish. Our in-house digital printing equipment serves a variety of purposes.

Using the industry's best-selling line of wide-format inkjets, we can bring your idea to life. Our inkjets allow us to print white ink, giving us the ability to create stylish and vibrant graphic designs. The three-layer printing process enables us to vividly and seamlessly create banners, canvas prints, vinyl decals, sign graphics, wall vinyl, window graphics, printed wall murals, directional stickers, and more custom products. The use of UV-cured Ink allows faster drying time and a more vibrant and durable image regardless of the medium.

- 10'-6" Max Print Width
- Large Format Capable
- Imm Max Media Thickness
- UV-Cured Ink for Beautiful Colors Day and Night
- Durable and Scratch Resistant Images
- White Ink Capable
- Three-Layer Printing Process
- Print Resolution up to 1,200dpi
- Custom Specs and Configurations Available
- Made in the USA

#### Banners



ASC utilizes the industry's best wide-format inkjets to bring you larger-than-life images to display wherever you want!

#### Vinyl Graphics



Utilize your window space for advertising and promotions. Perforated window vinyl allows you to display a vibrant window graphic with one-way visibility from the inside.

#### Vinyl Graphics & Decals



Wall, window, and floor vinyl can be adhered to virtually any surface! Make your branding visible with our durable and fade-resistant vinyl decals.

#### Flex Face Printing



From custom awnings, to sign cabinets, our three-layer printing process allows us to create vibrant Flex Face material for your illuminated signs that keep your image highly visible day and night!

#### Locations:

##### ASC IN (Headquarters)

340 Hoosier Dr.  
Angola, IN 46703  
(260) 665-1521

##### ASC FL

1710 Industrial Dr., Suite 5  
Edgewater, FL 32132

## Vinyl Graphic Solutions

Advertise and promote your business with eye-catching and durable vinyl graphics.

Looking for new ways to bring attention to your storefront or building? Use your window and door space for advertising and promotions! Perforated window vinyl allows you to display a window graphic to the outside world, while maintaining privacy and one-way visibility. Perforated vinyl can be used both inside and outside, from car windows to large format window displays. This style of window vinyl won't sacrifice natural light or visibility. Floor graphics also provide an alternative way of promoting your brand within a retail or commercial space. ASC offers various floor graphic configurations that will take the abuse of consistent foot traffic.

We offer various substrates to meet your needs, and our white ink three-layer printing process allow us to achieve a consistent and vibrant appearance. Introducing white ink between the two layers of images enables exceptional color reproduction during both day and night.

Perforated vinyl is a breeze to apply, wherever you want! Whether you bring a design to us, have a program file, or want some creative influence from our team, we can help! Our turnkey solutions and experienced graphics team are ready to help you achieve the outcome you want.

- See-Through One-Way Viewing
- Durable and Scratch Resistant UV-Cured Ink
- White-Ink Capable for Vivid Imagery
- 10'-6" Max Print Width
- Up to 1,200dpi
- Various Substrate Finishes
  - Gloss
  - Matte
  - Opaque
  - Clear
- Unlimited color options
- Easy to Clean
- Made in the USA



### Locations:

#### ASC IN (Headquarters)

340 Hoosier Dr.  
Angola, IN 46703  
(260) 665-1521

#### ASC FL

1710 Industrial Dr., Suite 5  
Edgewater, FL 32132

# Awning and Sign Contractors

## Banners

ASC utilizes the industry's best-selling line of wide-format inkjets to bring you larger-than-life images.

Custom vinyl banners can be used for all occasions. Birthday party banners make the perfect decoration. Order a graduation banner to celebrate a family member's big achievement. Promote your company or services to the world by ordering banners for your event or business.

ASC's vinyl signs and banners come in a variety of sizes to accommodate any occasion. Durable and water-resistant, they perform great as indoor banners as well as outdoor banners. Utilizing UV-cured ink, our three-layer printing process allows us to create beautiful and vibrant text and images that are highly visible during the day and at night! We offer a variety of hanging options like grommets, pole pockets, and other custom options so you can display your banners with pride anywhere you like.

Whether you bring a design to us, have a program file ready, or want some creative influence from our team, we can help! Our turnkey solutions and experienced graphics team are ready to help you achieve the outcome you want.

## Capabilities & Specs

- Imm Max Media Thickness
- Durable and Scratch Resistant UV-Cured Ink
- 16 oz
- Indoor/Outdoor
- Vinyl Banners
- Mesh Banners
- Fabric Banner
- Windscreens
- Perimeter Grommets
- Perimeter Hems
- Pole Pockets
- Custom Specs and Configurations Available
- Made in the USA



### Locations:

#### ASC IN (Headquarters)

340 Hoosier Dr.  
Angola, IN 46703  
(260) 665-1521

#### ASC FL

1710 Industrial Dr., Suite 5  
Edgewater, FL 32132



## Flex Face Applications

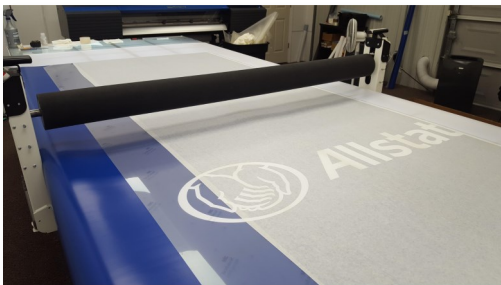
ASC utilizes the industry's best-selling line of wide-format inkjets to bring you vibrant and beautiful Flex Face systems that are visible day and night.

Flex face signs and awnings come in a variety of different forms. Depending on your application, flex faces can be used on standard awnings, sign cabinets, pylon signs, custom awnings, and more. Flex face substrates perform their best when paired with illuminated signs and awnings, either front-lit or back-lit with LED lights! However, a non-illuminated sign or awning will still provide the true color and vivid imagery you desire.

We offer various substrates to meet your needs, and our white ink three-layer printing process allows us to achieve a consistent appearance with both illuminated and non-illuminated signs and awnings. Introducing white ink between the two layers of images enables exceptional color reproduction during both day and night. Our flexible sign face printing process also includes UV-cured ink, giving our flexible face substrates increased durability.

Whether you bring a design to us, have a program file, or want some creative influence from our team, we can help! ASC has the turn-key solution for your project. Our aluminum frame construction is done in-house, and that allows us to help you build to your specifications, no matter what those specifications are.

- Three-Layer Printing Process
- Large Format Capable
- White Ink Capable
- UV-Cured Ink
- Durable and Scratch Resistant
- Illuminated or Non-Illuminated Systems
- LED Light Options
- Vinyl Overlamine Capable
- Various Flexible Face Substrates Available
- Custom Widths and Sizes
- Made in the USA



### Locations:

#### ASC IN (Headquarters)

340 Hoosier Dr.  
Angola, IN 46703  
(260) 665-1521

#### ASC FL

1710 Industrial Dr., Suite 5  
Edgewater, FL 32132

## Non-Illuminated Routed Signage

ASC's high quality routed signs can be made from industry approved materials such as aluminum, polycarbonate, acrylic, wood, and other popular products. Routed signs are an ideal choice when your project calls for a long-lasting, low maintenance sign.

Non-illuminated routed signs are made in a variety of materials and utilized in a multitude of interior and exterior applications. Uses range from parking signs, HDU, monument signs, tenant panels, wayfinding signs, name plates, menu boards, lobby signs, and much more.

Look to ASC to provide your next routed sign and let us help you bring attention to your brand. We offer countless design options to ensure your business will stand out from the competition and quick turn times to meet your needs.



## Signage Benefits & Specs

- Eye-Catching
- Cost-Effective Marketing
- Full Customization
- Unlimited Shapes and Sizes
- Multiple Material Options
  - Polycarbonate
  - Aluminum
  - Wood
  - Acrylic
  - ... and more
- Limitless Graphic Designs
- In-House Design Team
- Interior and Exterior Uses
- Made in the USA

### Locations:

#### ASC IN (Headquarters)

340 Hoosier Dr.  
Angola, IN 46703  
(260) 665-1521

#### ASC FL

1710 Industrial Dr., Suite 5  
Edgewater, FL 32132